

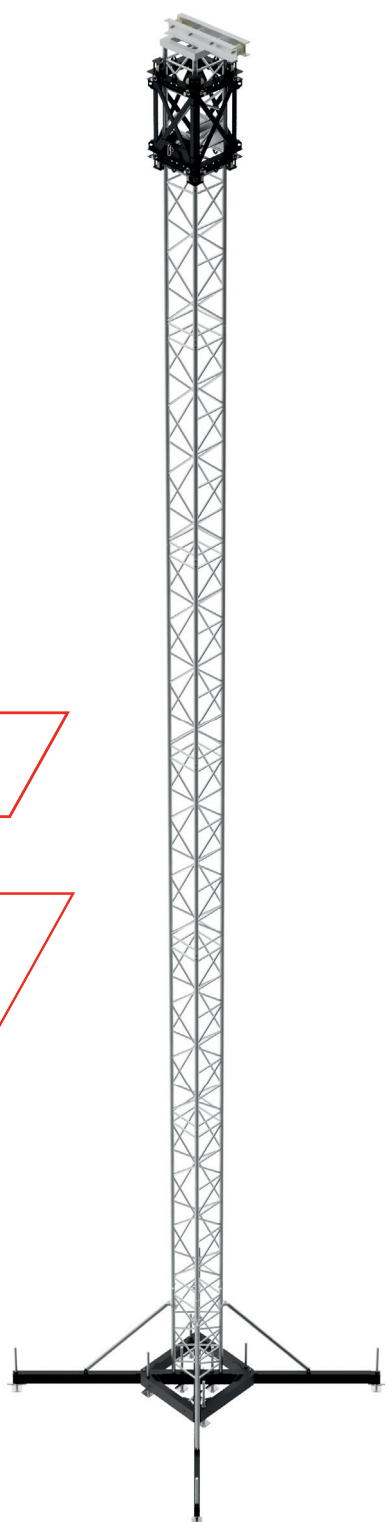
# Tower 3

Tower 3 is the tallest and highest capacity tower system in TAF range. It allows for a maximum height of 20 m and loading capacity of 8000 kg. Tower 3 is recommended to be anchored to Layher structures, with the base being optional.

Specifications	
SELF WEIGHT	1020 kg*
HEIGHT (max.)	20 m
LOAD CAPACITY (max.)	8000 kg

\*The weight may vary depending on the type of base plate

TT54TM Mast Section	
MAIN TUBES	60 × 5 mm
BRACES	30 × 3 mm
ALLOY	EN AW-6082 T6



## T3T-BP

Steel Base Plate



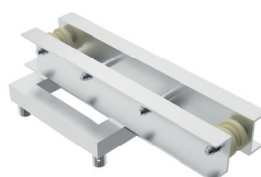
## T3T-SBT104M

Steel Sleeve Block



## T3T-TS

Top Section



## TT54TM-150SF

Safety Lock Truss



## T3T-LO

Long Outrigger



Contact us for more information or a price quote at [sales@taf.cz](mailto:sales@taf.cz)  
 Truss Aluminium Factory | Czech Republic | [www.taf.cz](http://www.taf.cz)

