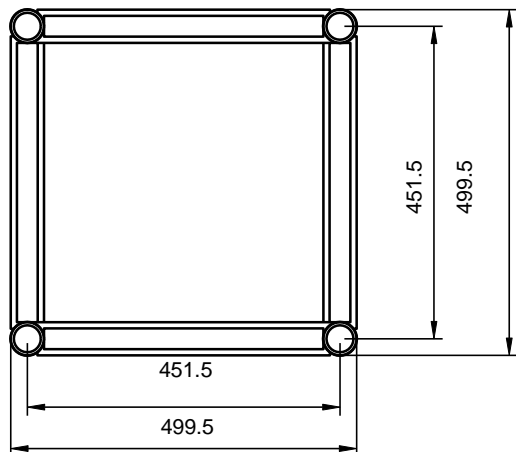
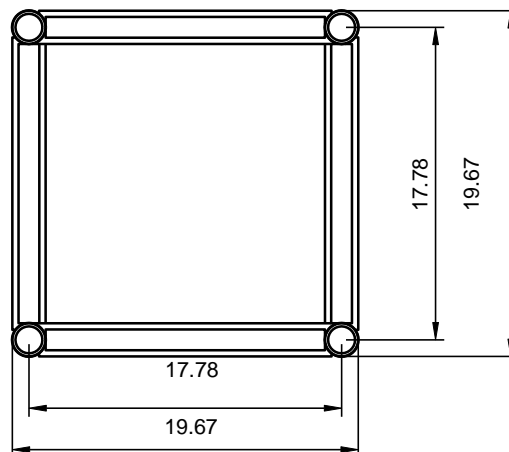


SIZE IN MILLIMETERS



SIZE IN INCHES



SPECIFICATIONS

TUBES	48 x 3 mm (1.89 x 0.12 in)
BRACES	25 x 3 mm (0.98 x 0.12 in)
ALLOY	EN AW-6082 T6



STRAIGHT SEGMENT LENGTHS

CODE	LENGTH		WEIGHT	
	m	ft	kg	lbs
GS500N-100	1.00	3.28	17.73	39.09
GS500N-150	1.50	4.92	27.30	60.19
GS500N-200	2.00	6.56	31.48	69.39
GS500N-300	3.00	9.84	45.09	99.41

LOADING TABLES

	4 m	6 m	8 m	10 m	12 m	14 m	16 m
Distrib. load [kg/m]	1467	670	369	230	154	108	79
Deflection [mm]	6	13	23	36	52	71	94
Point load [kg]	2657	1954	1476	1148	924	758	630
Deflection [mm]	4	10	19	30	43	59	79
	13.12 ft	19.68 ft	26.24 ft	32.81 ft	39.37 ft	45.93 ft	52.49 ft
Distrib. load [lbs/ft]	985.78	450.22	247.96	154.55	103.48	72.57	53.09
Deflection [in]	0.24	0.51	0.91	1.42	2.05	2.80	3.70
Point load [lbs]	5857.68	4307.83	3254.02	2530.91	2037.07	1671.10	1388.91
Deflection [in]	0.16	0.39	0.75	1.18	1.69	2.32	3.11