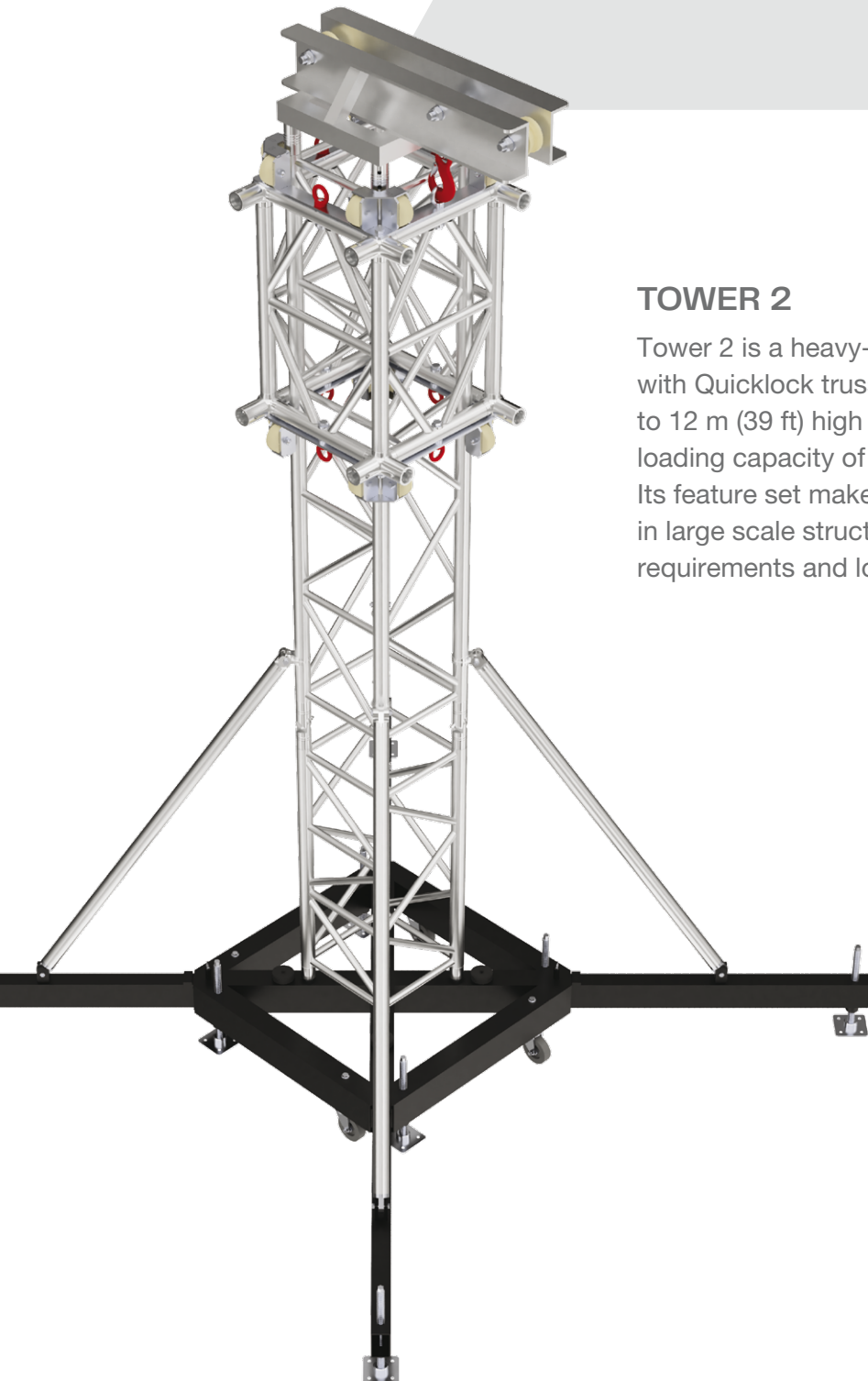


# TOWER 2



## TOWER 2

Tower 2 is a heavy-duty tower constructed with Quicklock truss segments. It can go up to 12 m (39 ft) high and features a maximum loading capacity of 2000 kg (4,409 lbs). Its feature set makes it the right choice for use in large scale structures with higher loading requirements and longer spans.

### PART LIST

T2T-BP	1 pc
T2T-SB	1 pc
T2T-TS-895	1 pc
T2T-LO	4 pcs
T1T-HS	4 pcs
T2T-SH	1 pc
TT44-100LD	1 pc
TT44-200LD	1 pc
TT44-300LD	3 pcs

### SPECIFICATIONS

SELF WEIGHT	380 kg (838 lbs)
HEIGHT	12 m (39 ft)
LOAD CAPACITY	2000 kg (4,409 lbs)

### TT44 MAST SECTION

MAIN TUBES	50 x 4 mm (1.97 x 0.16 in)
BRACES	25 x 3 mm (0.98 x 0.12 in)
ALLOY	EN AW-6082 T6



**T2T-BP**

Steel base plate  
980 x 980 x 340 mm  
(38.58 x 38.58 x 13.39 in)  
60.57 kg (133.53 lbs)



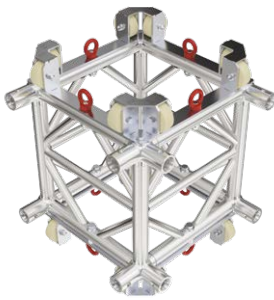
**T2T-TS-895**

Top section  
895 x 270 x 410 mm  
(35.24 x 10.63 x 16.14 in)  
22.33 kg (49.23 lbs)



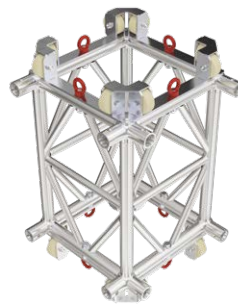
**T2T-LO**

Long outrigger  
2045 x 110 x 340 mm  
(80.51 x 4.33 x 13.39 in)  
18.93 kg (41.73 lbs)



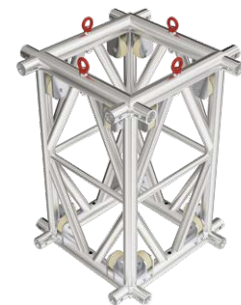
**T2T-SBT54M**

TT44 Sleeve block, TT54M  
637 x 752 x 637 mm  
(25.08 x 26.61 x 25.08 in)  
63.59 kg (140.19 lbs)



**T2T-SBT74M**

TT44 Sleeve block, TT74M  
637 x 992 x 637 mm  
(25.08 x 39.06 x 25.08 in)  
66.40 kg (146.38 lbs)



**T2T-SBT104M**

TT44 Sleeve block, TT104M  
740 x 1098 x 740 mm  
(29.13 x 43.23 x 29.13 in)  
52.1 kg (114.86 lbs)

**OPTIONAL ACCESSORIES**



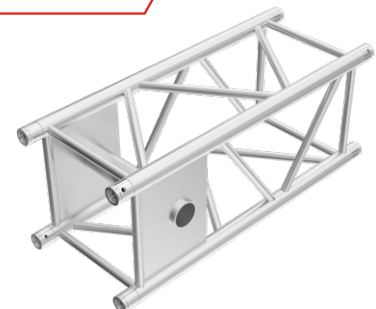
**T2T-SH**

Safety hooks  
355 x 90 x 55 mm  
(13.98 x 3.54 x 2.17 in)  
1.53 kg (3.37 lbs)



**T1T-HS**

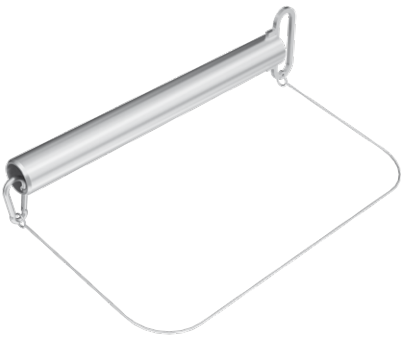
Hinge section  
49 x 166 x 66 mm  
(1.93 x 6.54 x 2.60 in)  
0.61 kg (1.33 lbs)






**TT44-100+SF**

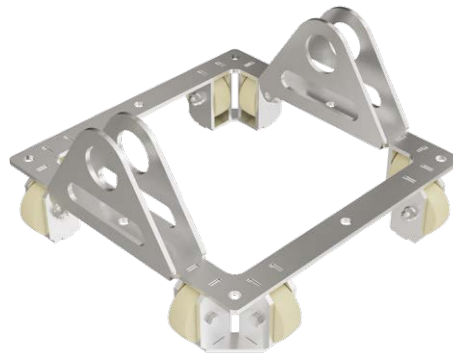
Safety lock truss  
400 x 400 x 1000 mm  
(15.75 x 15.75 x 39.37 in)  
16.08 kg (35.45 lbs)

# TOWER 2






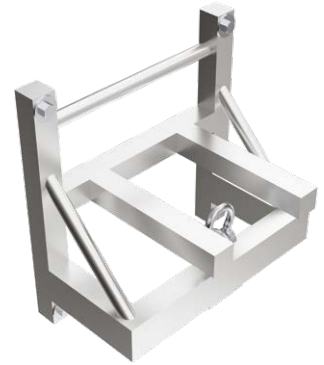
## T2T-ST

 Safety steel tube  
 655 x 150 x 62 mm (25.79 x 5.91 x 2.44 in)  
 1.78 kg (3.92 lbs)






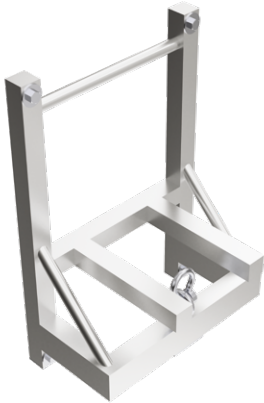
## T2T-SBWFSF

 Steel wheel frame + safety tube frame  
 584 x 584 x 285 mm (22.99 x 22.99 x 11.22 in)  
 8.16 kg (17.99 lbs)






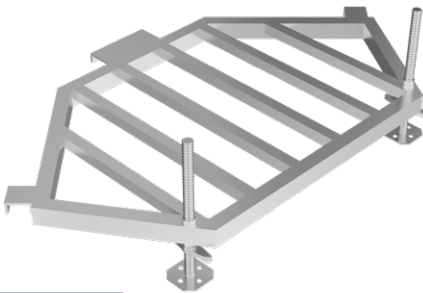
## T2T-MH-SB54

 Motor holder on sleeve block 54M  
 520 x 526 x 375 mm (20.47 x 20.71 x 14.76 in)  
 8.16 kg (17.99 lbs)



## T2T-MH-SB74

 Motor holder on sleeve block 74M  
 520 x 766 x 375 mm (20.47 x 30.16 x 14.76 in)  
 9.10 kg (20.07 lbs)



## T2T-BF

 Ballast frame  
 1100 x 1949 x 120 mm (43.31 x 76.73 x 4.72 in)  
 34.90 kg (76.93 lbs)

