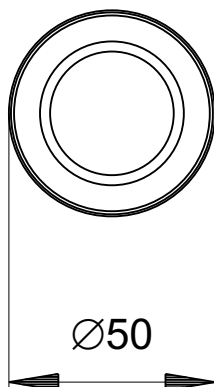
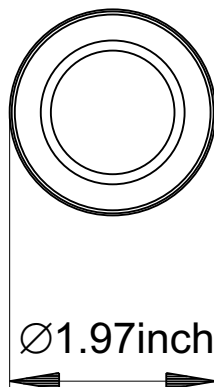


SIZE IN MILLIMETERS



SIZE IN INCHES



SPECIFICATIONS

TUBES	50x2mm (2 x 0.08inch)
ALLOY	EN-AW 6082 T6



STRAIGHT SEGMENT LENGTHS

CODE	LENGTH		WEIGHT	
	m	ft	kg	lbs
FT31-50	0.5m	1.64ft	0.7kg	1.55lbs
FT31-100	1m	3.28ft	1.1kg	2.45lbs
FT31-150	1.5m	4.92ft	1.5kg	3.36lbs
FT31-200	2m	6.56ft	1.9kg	4.26lbs
FT31-250	2.5m	8.20ft	2.3kg	5.16lbs
FT31-300	3m	9.84ft	2.8kg	6.07lbs

LOADING TABLES

	1m	2m	3m	4m
Distrib. Load [kg/m]	438	109	49	27
Deflection [mm]	9.4	37.4	84.2	149.7
Point load [kg]	219	109	73	55
Deflection [mm]	7.5	29.9	67.4	119.8
	3.28ft	6.56ft	9.84ft	13.12ft
Distrib. Load [lb/ft]	294.4	73.3	32.9	18.1
Deflection [inch]	0.4	1.5	3.3	5.9
Point load [lb]	482.9	240.3	161	121.3
Deflection [inch]	0.3	1.2	2.7	4.7